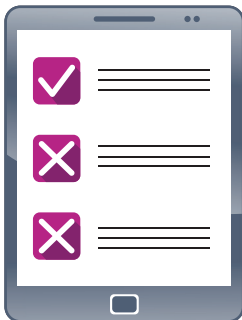


SCAN 2019

THE SURVEY OF CHALLENGES IN ACCESS TO DIAGNOSTICS AND TREATMENTS FOR NET PATIENTS



SCAN IS A GLOBAL ASSESSMENT:



- ✓ AMONG NET PATIENTS & HEALTHCARE PROFESSIONALS
- ✓ IN 14 LANGUAGES
- ✓ BY A SELF-ADMINISTERED ONLINE QUESTIONNAIRE
- ✓ LESS THAN 15 MINUTES TO COMPLETE

This autumn the International Neuroendocrine Cancer Alliance (INCA) invites NET patients and healthcare professionals to scan the access challenges to optimal care for NET patients.

We SCAN:



The availability of **NET diagnostic tools**



The level of access to **NET treatments**



The level of access to **ongoing checks**



The level of access to **healthcare professionals**



Out-of-pocket costs of NET treatment and care



The provision of **supportive services**



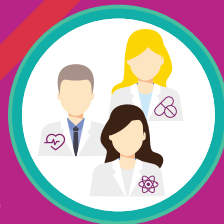
Leading **healthcare issues** NET patients face today

JOIN IN SCAN!

What are the key access issues for NET patients and healthcare professionals? Join the global sharing of experience.

If you are:

- **MEDICAL ONCOLOGIST**
- **GASTROINTESTINAL SPECIALIST**
- **ENDOCRINOLOGIST** • **PATHOLOGIST**
- **NUCLEAR MEDICINE SPECIALIST**
- **SURGEON** • **NURSE** • **GP**
- **HEMATOLOGIST** • **NUTRITIONIST**
- **PHYSICIAN ASSISTANT** • **RADIATION RADIOLOGIST** • **ONCOLOGIST**
- **PULMONOLOGIST**
- **PSYCHOLOGIST**



SPREAD THE WORD TO MAKE GLOBAL IMPACT!



If you are a **Healthcare Professional**, take the survey via <http://bit.ly/2xJ8eE3> or SCAN this QR code.



If you are a **NET patient** or a **NET patient caregiver**, take the survey via <http://bit.ly/2JtxDI5> or SCAN this QR code.

WE SCAN!



For more information visit
www.incalliance.org/scan



www.facebook.com/NETCANCERDAY



www.twitter.com/NETCANCERDAY



www.youtube.com/user/NETCANCERDAY

INCA International Neuroendocrine Cancer Alliance

A global umbrella organization representing 26 NET patient advocacy and research groups on 6 continents.